



Mechanical Seals

CEFILAC GPA®

Dynamic sealing solutions for demanding environments

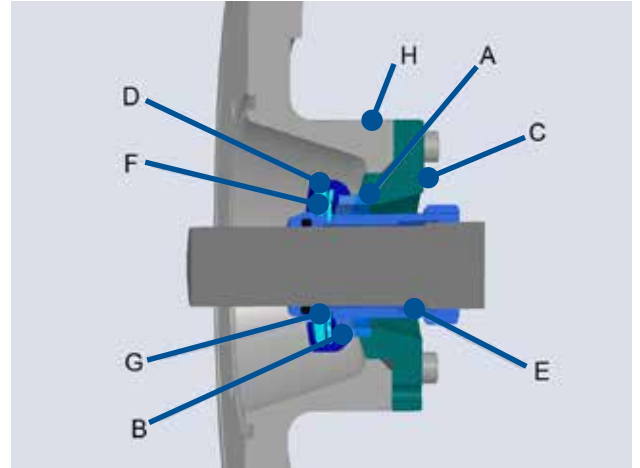
BENEFITS

Thanks to its unique design, the CEFILAC GPA® is a simple and reliable mechanical seal which can be used in extremely difficult environments: abrasive, corrosive, clogging, crystallizing fluids. CEFILAC GPA® seals, which require no flushing, are environmentally friendly and reduce operating costs.

DESCRIPTION

CEFILAC GPA® seals are based on two main components:

- the fixed ring (A) fitted in a housing (C) and mounted on the pump casing (H)
- the rotating seals consisting of a rotating ring (B) fitted in a housing (D) which rotate with the seal sleeve (E) thanks to the drive rings (G). The spring diaphragm (F) ensures a consistent load between the fixed and the rotating rings. The clearance between the outside of the seal sleeve and the inside of the rotating housing has been especially design to prevent any risks of clogging and any damages due to abrasive particles.



CEFILAC GPA®C Cartridge Design

Technetics Group proposes solid cartridge assembly ready to be assembled on the pump shaft. This cartridge type which is preset at the factory, requires no additional adjustment on the field. No special machining of the shaft is necessary for installation.

MATERIALS & CODE

Pos. 1/2	U5: Tungsten carbide with cobalt binder U6: Tungsten carbide with nickel binder U8: Silicon carbide U4: Special carbide
Pos. 3	P: Nitrile E: Ethylene propylene V: FKM M5: Neoprene PTFE coated
Pos. 4	M5: Neoprene PTFE coated P1: HNBR V: FKM
Pos. 5	D: Carbon steel G: Stainless steel 316L T: Special alloyed steel W: Chromium oxide coating X: Special coatings

Note: other materials are available upon request.

MATERIAL CODE

MECHANICAL SEAL - IDENTIFICATION

CEFILAC GPA® - CEFILAC GPA®C - CEFILAC GPA®CP

	Position	
	1 2 3 4 5	
	1	1 - ROTATING RING
	2	2 - FIXED RING
	3	3 - SECONDARY O-RINGS
	4	4 - CONE SPRING MEMBRANE
	5	5 - SUPPORTS AND SLEEVE
TYPE DN DRAWING N° MATERIAL CODE		
(mm)		

TECHNETICS GROUP

EnPro Industries companies

90, rue de la Roche du Geai
CS 52913

42029 Saint Etienne cedex 1 FRANCE

Phone: +33 (0) 4 77 43 51 00

Fax: +33 (0) 4 77 43 51 51

france@technetics.com

technetics.com

Technetics
GROUP

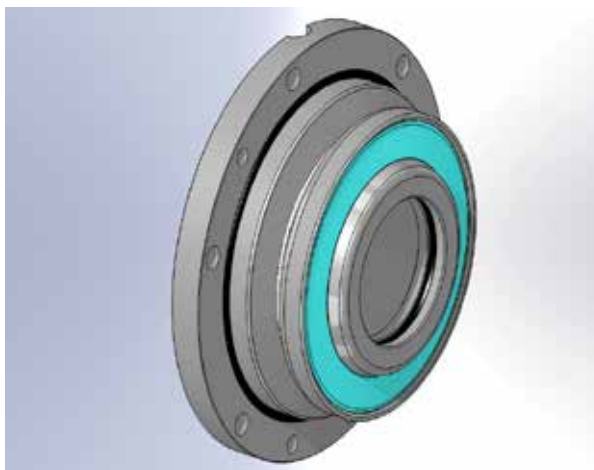
EnPro Industries companies

APPLICATIONS

CEFILAC GPA®, a reliable and robust mechanical seal for abrasive suspensions. This mechanical seal does not require flushing, is environmentally friendly, and reduces operating costs.

ALUMINA PROCESSING AND MINING

In the alumina production process, the bauxite and hydrated alumina in suspension are pumped over long distances by very large slurry pumps. Stuffing boxes are the most common type of barrier between the process and the atmosphere used on these pumps and other rotating equipment such as mixers and agitators.



Stuffing boxes require continuous water flushing for cooling and cleaning, a very expensive process which generates costs quite often overlooked in cost analysis; further the extraneous flush water must be removed from the pumped media and environment if leaks occur.

Unlike packing often used on pumps in mining industry, CEFILAC GPA® seals do not require any continuous water flushing for cooling and cleaning. This generates significant cost savings in terms of water saving and extra costs to remove flush water from the pumped media by evaporation.



Unlike other mechanical seals, the CEFILAC GPA® does not clog or wear quickly. CEFILAC GPA® seals have acquired an unequalled reputation in alumina refineries throughout the world. The CEFILAC GPA® key features are a simple, sturdy, proven design and cost effectiveness.

OTHER APPLICATIONS

Other industries facing similar problems related to pumping abrasive, corrosive, clogging, or crystallizing fluids are successfully using CEFILAC GPA® seals for both slurry and liquors. These applications include phosphoric acid for fertilizers, cellulose, pulp and paper, calcium carbonate, coal mining, sugar refining, limestone for cement manufacturing, and mining and processing of zinc, lead, nickel, and gold.

CEFILAC GPA® seals can be adapted to almost all commercially available centrifugal pumps, mixers, agitators, drilling heads and other similar equipment. Our engineering staff is able to direct all modifications required to replace the previous sealing solutions, and the retrofitting of equipment in the field.

TECHNETICS GROUP

EnPro Industries companies

90, rue de la Roche du Geai
CS 52913

42029 Saint Etienne cedex 1 FRANCE

Phone: +33 (0) 4 77 43 51 00

Fax: +33 (0) 4 77 43 51 51

france@technetics.com
technetics.com

Technetics
GROUP

EnPro Industries companies

APPLICATION DETAILS

APPLICATIONS	PARAMETERS	TYPE/CODE CEFILAC GPA®	PUMPS MANUFACTURER
Alumina refineries Slurry - Liquor Alumina solution	Temp: up to 284°F (140°C) P: up to 10 bar Up 500 g/l solids contents	CEFILAC GPA® / CEFILAC GPA®C U5 U5 E N DW U5 U5 E M5 FW	CANADA Pumps GOULDS Pumps FLOWSERVE Pumps: (Jeumont-Schneider-Worthington) KSB Pumps ENSIVAL MORET Pumps WEIR MINERALS Pumps WARMAN Pumps
Fertilizers Phosphoric acid	Temp: up to 176°F (80°C) P: up to 6 bar Solids contents: 300 g/l	CEFILAC GPA® / CEFILAC GPA®C CEFILAC GPA®CP U8 U8 V M5 TX	ENSIVAL MORET Pumps FLOWSERVE Pumps
Cellulosic Liquors	Temp: up to 176°F (80°C) P: up to 6 bar	CEFILAC GPA® U5 U5 E N DW	WEIR MINERALS Pumps ENSIVAL MORET Pumps
Calcium Carbonate	Temp: ambient P: up to 6 bar	CEFILAC GPA® U5 U5 E M5 FW	METSO Pumps FLOWSERVE Pumps
Pulverulent coal	P: up to 6 bar N: 30 rpm	CEFILAC GPA®CP GPEC U5 U5 V M5 D	K-TRON DOSING
Water and coal	P: up to 6 bar N: 1800 rpm	CEFILAC GPA® / CEFILAC CEFILAC GPA®C U5 U5 E M5 FW	WARMAN Pumps FAPMO Pumps
Mineral treatment (zinc, nickel...)	Abrasive and corrosive solutions (H2SO4)	CEFILAC GPA®CP U8 U8 V M5 TX	FLOWSERVE Pumps WARMAN Pumps
Slurry - Sand Silicium slurries	Temp: ambient P: up to 6 bar Solids content: 100 to 600 g/l	CEFILAC GPA® CEFILAC GPA®C U5 U5 E N DW	ESSA-MICO WEIR MINERALS Pumps NEYRTEC PCM (Moineau pump) LINATEX SIHI Pump ALLWEILER Pumps
Painting Pigments	Temp: ambient P: up to 6 bar	CEFILAC GPA® "chamfered-face" U5 U8 E M5 G	NETZSCH / SEEPEX Pumps BORNEMANN Pumps
Natural gas treatment	Temp: ambient P: up to 6 bar	CEFILAC GPA® / CEFILAC GPA®C U5 U5 E N DW U8 U8 E M5 GW	WEIR MINERALS Pumps SIHI Pumps
Sugar industry	Temp: up to 194°F (90°C) P: up to 6 bar Solids: up to 300 g/l	CEFILAC GPA® / CEFILAC GPA®C CEFILAC GPA®CP U5 U5 E N GW	WEIR MINERALS Pumps FLOWSERVE Pumps ENSIVAL MORET Pumps
Industrial powders	Ambient: dry or humid P: 3 bar Temp: up to 212° F (100°C)	CEFILAC GPA®CP U5 U5 E M5 G	GUEDU AGITATOR AGITEC VALOREL

TECHNETICS GROUP

EnPro Industries companies

90, rue de la Roche du Geai
CS 52913

42029 Saint Etienne cedex 1 FRANCE

Phone: +33 (0) 4 77 43 51 00

Fax: +33 (0) 4 77 43 51 51

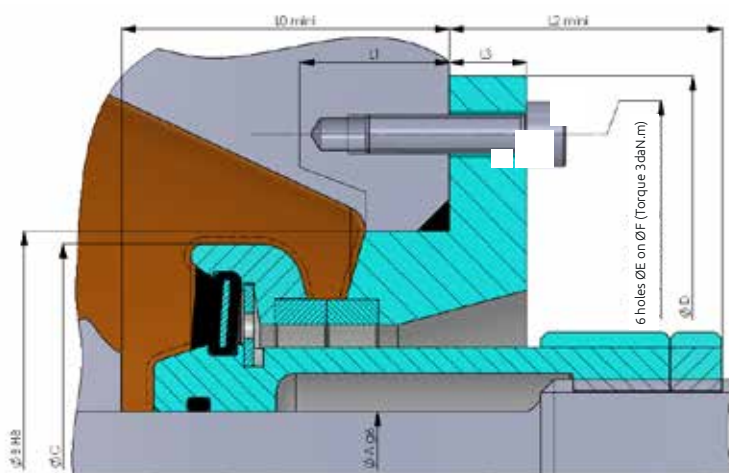
france@technetics.com

technetics.com

Technetics
GROUP

EnPro Industries companies

CEFILAC GPA® THREADED TYPE STATIONARY RING STYLE 03



DIMENSION TABLE

Model mm	ØA mm	ØB mm	ØC mm	ØD mm	ØE mm	ØF mm	L0 mm	L1 mm	L2 mm	L3 mm	Deflection mm	Pitch* mm
47 x 55	20 → 32	76	72	124	11	106	48.5	13	32	12	1.5	1 / 1.5
72 x 82	33 → 51	108	99	168	13	148	61	15	38	18	2	1.5
103 x 113	52 → 78	140	135	199	13	180	61	15	39	19	2	2
132 x 144	79 → 108	185	170	240	13	220	62	16	40	20	2	2
160 x 178	109 → 137	210	208	290	13	260	72	22	40	20	2	2
211 x 229	138 → 180	280	264	370	17	330	93	25	42	22	2.5	2 / 3

*Pitch: please consult us according to diameter.

APPLICATIONS



Weir Minerals pump



CEFILAC GPA® with threaded sleeve

TECHNETICS GROUP

EnPro Industries companies

90, rue de la Roche du Geai
CS 52913

42029 Saint Etienne cedex 1 FRANCE

Phone: +33 (0) 4 77 43 51 00

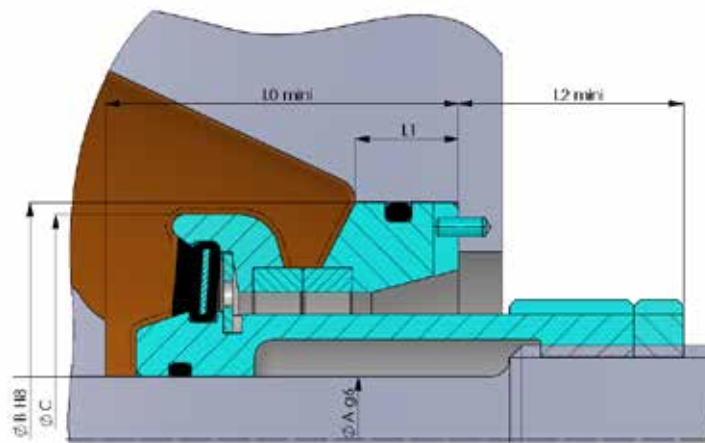
Fax: +33 (0) 4 77 43 51 51

france@technetics.com
technetics.com

Technetics
GROUP

EnPro Industries companies

CEFILAC GPA® THREADED TYPE STATIONARY RING STYLE 13



DIMENSION TABLE

Model mm	ØA mm	ØB mm	ØC mm	L0 mm	L1 mm	L2 mm	Deflection mm	Pitch* mm
47 x 55	20 → 32	76	72	50.5	15	40.5	1.5	1 / 1.5
72 x 82	33 → 51	108	99	61	15	48	2	1.5
103 x 113	52 → 78	140	135	63	17	57	2	2
132 x 144	79 → 108	185	170	67	18	58	2	2
160 x 178	109 → 137	210	208	86	34	60	2	2
211 x 229	138 → 180	280	264	105	40	62	2.5	2 / 3

*Pitch: please consult us according to diameter.

APPLICATIONS



KSB pump



CEFILAC GPA® with threaded sleeve

TECHNETICS GROUP

EnPro Industries companies

90, rue de la Roche du Geai
CS 52913

42029 Saint Etienne cedex 1 FRANCE

Phone: +33 (0) 4 77 43 51 00

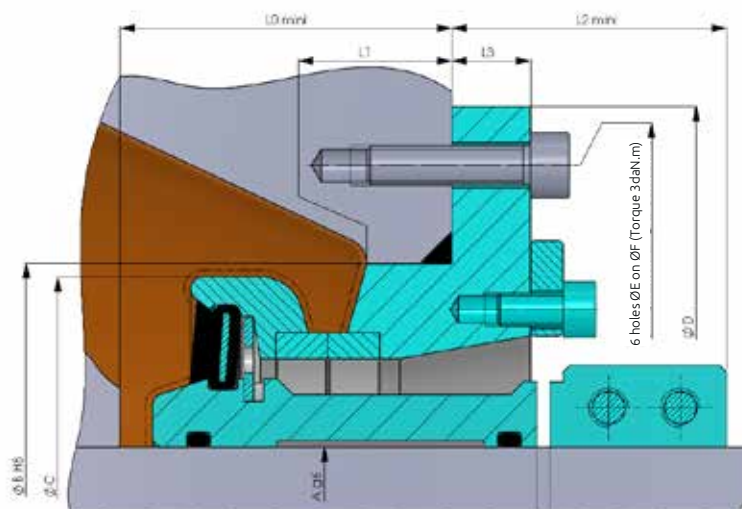
Fax: +33 (0) 4 77 43 51 51

france@technetics.com
technetics.com

Technetics
GROUP

EnPro Industries companies

CEFILAC GPA®C CARTRIDGE TYPE STATIONARY RING STYLE 03C



DIMENSION TABLE

Model mm	ØA mm	ØB mm	ØC mm	ØD mm	ØE mm	ØF mm	L0 mm	L1 mm	L2 mm	L3 mm
47 x 55	20 → 32	76	72	124	11	106	48.5	13	32	12
72 x 82	33 → 51	108	99	168	13	148	61	15	38	18
103 x 113	52 → 78	140	135	199	13	180	61	15	39	19
132 x 144	79 → 108	185	170	240	13	220	62	16	40	20
160 x 178	109 → 137	210	208	290	13	260	72	22	40	20
211 x 229	138 → 180	280	264	370	17	330	93	25	42	22

APPLICATIONS



WARMAN pump



CEFILAC GPA®C cartridge type

TECHNETICS GROUP

EnPro Industries companies

90, rue de la Roche du Geai
CS 52913

42029 Saint Etienne cedex 1 FRANCE

Phone: +33 (0) 4 77 43 51 00

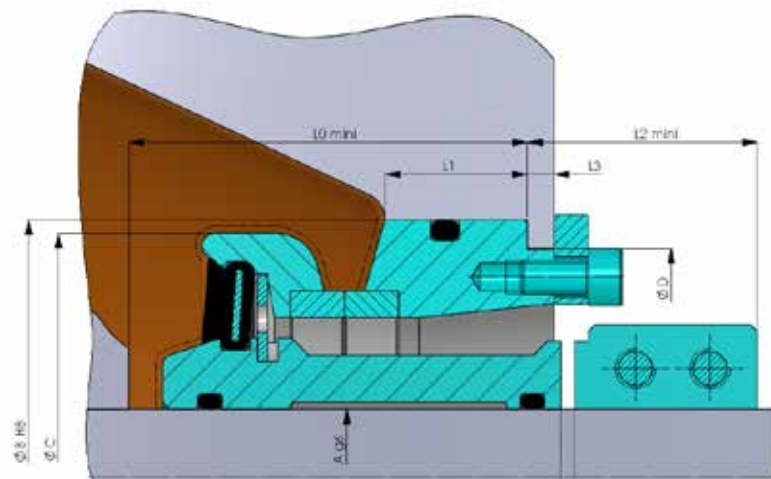
Fax: +33 (0) 4 77 43 51 51

france@technetics.com
technetics.com

Technetics
GROUP

EnPro Industries companies

CEFILAC GPA®C CARTRIDGE TYPE STATIONARY RING STYLE 43C



DIMENSION TABLE

Model mm	ØA mm	ØB mm	ØC mm	ØD mm	L0 mm	L1 mm	L2 mm	L3 mm
47 x 55	20 → 32	76	72	68	50.5	15	25	4
72 x 82	33 → 51	108	99	102	61	15	27.5	6
103 x 113	52 → 78	140	135	131	63	17	30	6
132 x 144	79 → 108	185	170	177	67	18	33	6
160 x 178	109 → 137	210	208	202	86	34	50	6
211 x 229	138 → 180	280	264	265	105	40	60	8

APPLICATIONS



KWP pump



CEFILAC GPA®C cartridge type

TECHNETICS GROUP

EnPro Industries companies

90, rue de la Roche du Geai
CS 52913

42029 Saint Etienne cedex 1 FRANCE

Phone: +33 (0) 4 77 43 51 00

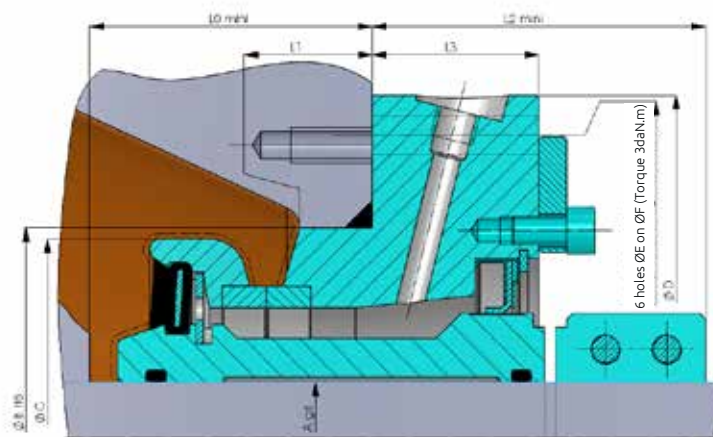
Fax: +33 (0) 4 77 43 51 51

france@technetics.com
technetics.com

Technetics
GROUP

EnPro Industries companies

CEFILAC GPA®C PROTECTED CARTRIDGE TYPE STATIONARY RING STYLE 03CP



DIMENSION TABLE

Model mm	ØA mm	ØB mm	ØC mm	ØD mm	ØE mm	ØF mm	L0 mm	L1 mm	L2 mm	L3 mm
47 x 55	20 → 32	76	72	124	11	106	48.5	13	61.5	30
72 x 82	33 → 51	108	99	168	13	148	61	15	70	35
103 x 113	52 → 78	140	135	199	13	180	61	15	81	40
132 x 144	79 → 108	185	170	240	13	220	62	16	85	40
160 x 178	109 → 137	210	208	290	13	260	72	22	90	40
211 x 229	138 → 180	280	264	370	17	330	93	25	93	42

APPLICATIONS



Mixer



CEFILAC GPA®CP is also suitable to seal mixers or tanks

TECHNETICS GROUP

EnPro Industries companies

90, rue de la Roche du Geai
CS 52913

42029 Saint Etienne cedex 1 FRANCE

Phone: +33 (0) 4 77 43 51 00

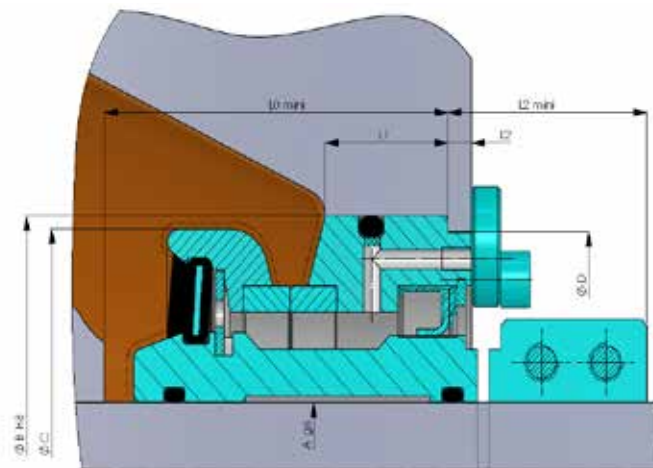
Fax: +33 (0) 4 77 43 51 51

france@technetics.com
technetics.com

Technetics
GROUP

EnPro Industries companies

CEFILAC GPA®CP PROTECTED CARTRIDGE TYPE STATIONARY RING STYLE 43CP



DIMENSION TABLE

Model mm	ØA mm	ØB mm	ØC mm	ØD mm	L0 mm	L1 mm	L2 mm	L3 mm
47 x 55	20 → 32	76	72	68	50.5	15	25	4
72 x 82	33 → 51	108	99	102	61	15	27.5	6
103 x 113	52 → 78	140	135	131	63	17	30	6
132 x 144	79 → 108	185	170	177	67	18	33	6
160 x 178	109 → 137	210	208	202	86	34	50	6
211 x 229	138 → 180	280	264	265	105	40	60	8

APPLICATIONS



DURCO pump for the chemical industry



CEFILAC GPA®C with grease and nitrogen buffer

TECHNETICS GROUP

EnPro Industries companies

90, rue de la Roche du Geai
CS 52913

42029 Saint Etienne cedex 1 FRANCE

Phone: +33 (0) 4 77 43 51 00

Fax: +33 (0) 4 77 43 51 51

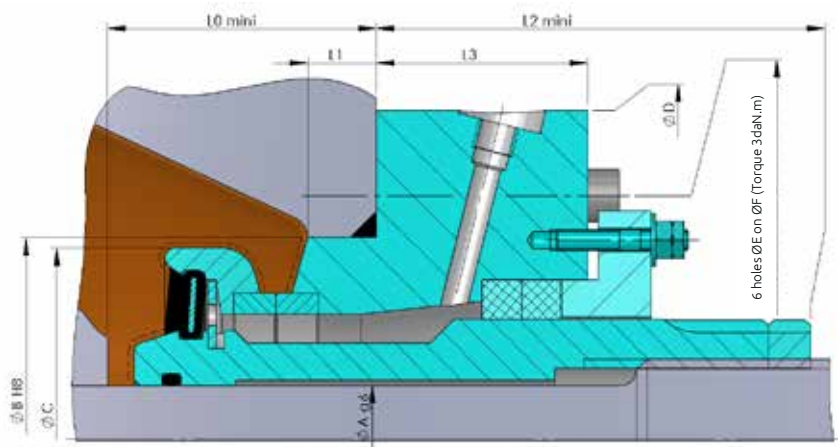
france@technetics.com

technetics.com

Technetics
GROUP

EnPro Industries companies

CEFILAC GPA®C CARTRIDGE TYPE STATIONARY RING STYLE 03 PE



DIMENSION TABLE

Model mm	ØA mm	ØB mm	ØC mm	ØD mm	ØE mm	ØF mm	L0 mm	L1 mm	L2 mm	L3 mm	Flèche mm	Pas* mm
47 x 55	20 → 32	76	72	124	11	106	48.5	13	Please contact us	Please contact us	1.5	1 / 1.5
72 x 82	33 → 51	108	99	168	13	148	61	15			2	1.5
103 x 113	52 → 78	140	135	199	13	180	61	15			2	2
132 x 144	79 → 108	185	170	240	13	220	62	16			2	2
160 x 178	109 → 137	210	208	290	13	260	72	22			2	2
211 x 229	138 → 180	280	264	370	17	330	93	25			2.5	2 / 3

APPLICATIONS



FLOWSERVE Pump



CEFILAC GPA®PE protected cartridge

TECHNETICS GROUP

EnPro Industries companies

90, rue de la Roche du Geai
CS 52913

42029 Saint Etienne cedex 1 FRANCE

Phone: +33 (0) 4 77 43 51 00

Fax: +33 (0) 4 77 43 51 51

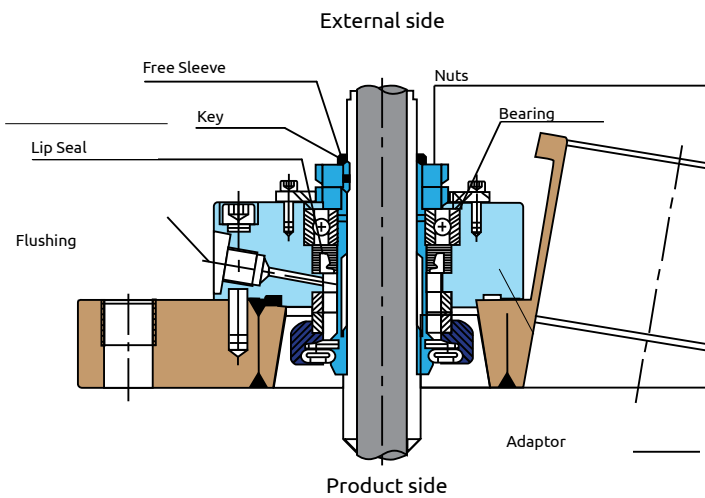
france@technetics.com
technetics.com

Technetics
GROUP

EnPro Industries companies

GPE C : GPA MECHANICAL SEAL WITH EMBEDDED BEARING

These mechanical seals have been specially designed for applications with significant shaft bending (ex: vertical or horizontal agitators). This design allows the friction faces of the mechanical seal to work in ideal conditions to optimize the life of the seal.



Example of mechanical seal for agitator

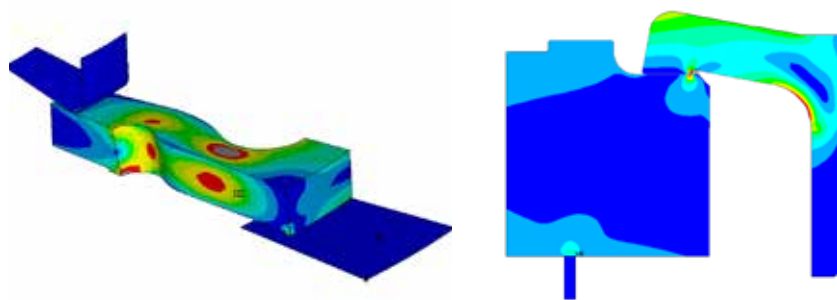


GPE C

INNOVATION AND ADVANCED SEALING SOLUTIONS

Based on his expertise in the dynamic sealing field, Technetics Group develops and sells innovative sealing solutions adapted to the various applications of its customers.

Thanks to its design center, calculation tools and numerical modelization, Technetics Group is not only able to adapt the mechanical seals to your environment, but is also able to design completely new mechanical seals to meet your specific requirements: high viscosity products, abrasive products, high temperature, high speed and high pressure.



Finite Element Analysis (FEA)

TECHNETICS GROUP

EnPro Industries companies

90, rue de la Roche du Geai
CS 52913

42029 Saint Etienne cedex 1 FRANCE

Phone: +33 (0) 4 77 43 51 00

Fax: +33 (0) 4 77 43 51 51

france@technetics.com

technetics.com

Technetics
GROUP

EnPro Industries companies

PREST ON-SITE SERVICES

Technetics Group's PREST services enable the assembly of mechanical seals in your facilities in the best conditions and will get your equipment quickly running again. A team of qualified technicians ensures quality mounting and better reliability of your equipment.

Technetics Group PREST on-site services are also dedicated to optimizing your scheduled and non-scheduled maintenance shutdowns. Our specialist sealing technicians will bring all their expertise to train your staff and will provide you with expert recommendations.



CEFILAC GPA® MECHANICAL SEALS FOR FOOD INDUSTRY

Technetics Group has developed a range of CEFILAC GPA® mechanical seals to meet the most stringent requirements for food industries. These mechanical seals not only meet the FDA (Food & Drug Administration) standard but also the European Regulation EN 1935-2004 combining the principle of inertia of components with good manufacturing practices in accordance with EN 2023-2006. In order to comply with the above European regulations, Technetics has invested in new equipment such as a cleaning and packaging line.

Technetics Group can also develop custom mechanical seals according to the rules set out by the European Hygienic Engineering Design Group (EHEDG) to meet the hygienic design requirements of equipment intended for food industry.

Applications:

- Agitators
- Mixers
- Kneaders
- Washing systems
- Bottling systems
- Pumps



[X] All the relevant categories of materials*		Indicate the other applicable ones	
Active and intelligent materials and substances			
A	Adhesives		
B	Coatings		
C	Cells		
D	Composites		
E	Electronics		
F	Fluoropolymers		
G	Food contact materials		
H	High performance polymers		
I	Metals and alloys		
J	Non-metallic fibers		
K	Paints and varnishes		
L	Plastics		
M	Polymers		
N	Refrigerants		
O	Seals		
P	Specialty materials		
Q	Surface treatments		
R	Textiles		
S	Welding materials		
T	Wires		
U	Other (please specify)		

* List of Annex 1 of regulation (EC) No. 1935/2004

TECHNETICS GROUP

EnPro Industries companies

90, rue de la Roche du Geai
CS 52913

42029 Saint Etienne cedex 1 FRANCE

Phone: +33 (0) 4 77 43 51 00

Fax: +33 (0) 4 77 43 51 51

france@technetics.com
technetics.com



EnPro Industries companies

QUALITY AND TEST RIGS

Technetics Group has several instrumented test rigs which allow us to characterize our mechanical seals in extreme working conditions (abrasion, high speed, etc.) reproducing the main service conditions. These tests rigs allow to record the leakage of the mechanical seals and to evaluate their tribological properties.

Mechanical seals from Technetics Group are systematically tested and verified on our test rigs before shipment. These controls can be also performed on field.



Sealing control test bench



Test bench for slurry applications

REFURBISHING

Technetics Group offers a complete refurbishing of the CEFILAC GPA® seals with the same warranty as originally manufactured seals. The refurbishing program is geared towards cost reduction and customer satisfaction.



THE TECHNICAL DATA CONTAINED HEREIN IS BY WAY OF EXAMPLE AND SHOULD NOT BE RELIED ON FOR ANY SPECIFIC APPLICATION. TECHNETHICS GROUP WILL BE PLEASED TO PROVIDE SPECIFIC TECHNICAL DATA OR SPECIFICATIONS WITH RESPECT TO ANY CUSTOMER'S PARTICULAR APPLICATIONS. USE OF THE TECHNICAL DATA OR SPECIFICATIONS CONTAINED HEREIN WITHOUT THE EXPRESS WRITTEN APPROVAL OF TECHNETHICS GROUP IS AT USER'S RISK AND TECHNETHICS GROUP EXPRESSLY DISCLAIMS RESPONSIBILITY FOR SUCH USE AND THE SITUATIONS WHICH MAY RESULT THEREFROM.

TECHNETICS GROUP MAKES NO WARRANTY, EXPRESS OR IMPLIED, THAT UTILIZATION OF THE TECHNOLOGY OR PRODUCTS DISCLOSED HEREIN WILL NOT INFRINGE ANY INDUSTRIAL OR INTELLECTUAL PROPERTY RIGHTS OF THIRD PARTIES.

TECHNETICS GROUP IS CONSTANTLY INVOLVED IN ENGINEERING AND DEVELOPMENT. ACCORDINGLY, TECHNETHICS GROUP RESERVES THE RIGHT TO MODIFY, AT ANY TIME, THE TECHNOLOGY AND PRODUCT SPECIFICATIONS CONTAINED HEREIN.

ALL TECHNICAL DATA, SPECIFICATIONS AND OTHER INFORMATION CONTAINED HEREIN IS DEEMED TO BE THE PROPRIETARY INTELLECTUAL PROPERTY OF TECHNETHICS GROUP. NO REPRODUCTION, COPY OR USE THEREOF MAY BE MADE WITHOUT THE EXPRESS WRITTEN CONSENT OF TECHNETHICS GROUP.

Revised March 2019 - This document replaces any previous versions

TECHNETICS GROUP

EnPro Industries companies

90, rue de la Roche du Geai
CS 52913

42029 Saint Etienne cedex 1 FRANCE

Phone: +33 (0) 4 77 43 51 00

Fax: +33 (0) 4 77 43 51 51

france@technetics.com

technetics.com

Technetics
GROUP

EnPro Industries companies

SEMI-DYNAMIC SEALS DATA SHEET

Tel: +33 (0) 4 77 43 51 00

Fax: +33 (0) 4 77 43 51 51

Email: france@technetics.com

COMPANY:		TEL:	
CUSTOMER:		FAX:	
COUNTRY:		EMAIL:	
		DATE:	
END USER:		INSTALLATION LOCATION:	
REF INQUIRY:		N°:	
Activity Field:		WORKING CONDITIONS	
Unit:			
Type of Apparatus:			
Reference:			
Manufacturer:			
MEDIUM			
Gas <input type="checkbox"/> Liquid <input type="checkbox"/> Vacuum			
Nature:			
PH:			
Density:			
Viscosity:			
% Solids:			
		Speed: _____ rpm	
		Constant: _____	
		Variable: _____	
		Operating Cycle	
		Hours/day: _____ min: _____	
		Days/months: _____ max: _____	
		Months/year: _____	
		Requested sealing level: _____	
		Life time: _____	
ASSEMBLY			
Existing		Designed	
To Be Defined			
Dimensions: Standard: _____ Norm: _____			
Type of Assembly: Single: _____ External: _____ Rotating: _____ Adjustable: _____			
Double: _____ Internal: _____ Fixed: _____ Cartridge: _____			
SHAFT METER:		Sleeve Diameter: _____	
HOUSING:		Existing: _____ Changeable: _____ To Be Defined: _____	
Diameter: _____			
Available axial space: _____			
Compatible Materials		SUPPORTS/SPRINGS	
Steel: _____		Carbon: _____	
Stainless steel: _____		Tungsten carbide: _____	
Other: _____		SiC: _____	
		Al2O3: _____	
		Other: _____	
		SECONDARY SEALS	
		Nitrile: _____	
		EP: _____	
		Viton: _____	
		PTFE: _____	
		Other: _____	
MECHANICAL SEAL:		Primarily Used: _____	
		Wished: _____	
		To Be Defined: _____	
Trademark/Type: _____			
Material: _____			
Reference of enclosed drawings: _____			
OTHERS:			
Other Technical Information: _____			
Other Commercial Information: _____		Issuer: _____	
Qty to be Quoted: _____		Yearly Consumption: _____ Date: _____	

For more information on how
Technetics Group affects your critical
markets, visit technetics.com.

ASIA

Blk 203, #05-52
Woodlands Avenue 9
Woodlands Spectrum 2,
738956 Singapore

Phone: +65 6759 2335
Fax: +65 6759 7319

No. 10 Xiangjie Road, SND
Jiangsu Province Suzhou,
215129 P.R. China

Phone: +86-0512-62921000

FRANCE

90, rue de la Roche du Geai
CS 52913
42029 Saint Etienne cedex 1 FRANCE

Phone: +33 (0) 4 77 43 51 00
Fax: +33 (0) 4 77 43 51 51

49 Avenue Charles de Gaulle
Z.I. Survaure
42607 Montbrison cedex FRANCE

Phone: +33 (0) 4 77 96 79 80

GERMANY

Falkenweg 1
41468 Neuss
Germany

Phone: 0800-627-0151

UK

Unit 3 Smitham Bridge Road
Hungerford, Berkshire RG17 0QP UK

Phone: +44 (0) 1488 662218
Fax: +44 (0) 1488 680938

Acan Way, Coventry Road
Narborough, Leicester LE19 2FT UK

Phone: +44 (0) 1162 727411
Fax: +44 (0) 1162 727412

USA

2791 The Boulevard
Columbia, SC 29209 USA

Phone: +1-803-783-1880
Fax: +1-803-783-4279

305 Fentress Boulevard
Daytona Beach, FL 32114 USA

Phone: +1-386-253-0628
Fax: +1-386-257-0122

1700 E. International Speedway Blvd
DeLand, FL 32724 USA

Phone: +1-386-736-7373
Fax: +1-386-738-4533

1600 Industry Road
Hatfield, PA 19440 USA

Phone: +1-800-618-4701
Fax: +1-215-855-3570

10633 W Little York, Bldg 3, Suite 300
Houston, TX 77041 USA

Phone: +1-713-983-4201
Fax: +1-713-466-3721

990 Richard Avenue, Suite 117
Santa Clara, CA 95050 USA

Phone: +1-669-242-8804
Fax: +1-669-242-8492

TECHNETICS GROUP

EnPro Industries companies

sales@technetics.com
technetics.com



EnPro Industries companies